



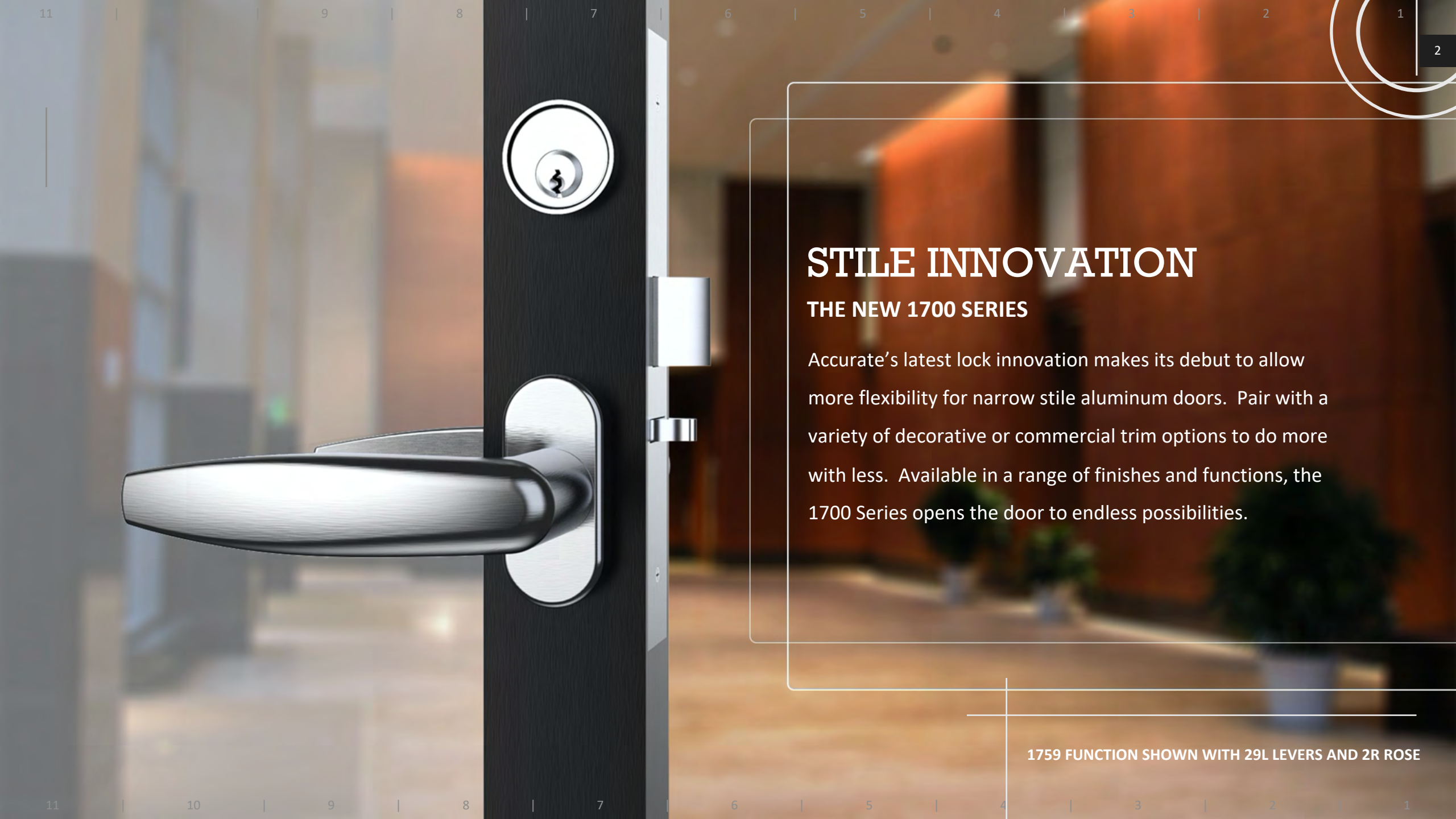
ACCURATE

LOCK & HARDWARE

AMERICAN CRAFTED SINCE 1972

1700 Series Narrow Backset Mortise Locks

Redefining Options for Narrow Stile Doors



STILE INNOVATION

THE NEW 1700 SERIES

Accurate's latest lock innovation makes its debut to allow more flexibility for narrow stile aluminum doors. Pair with a variety of decorative or commercial trim options to do more with less. Available in a range of finishes and functions, the 1700 Series opens the door to endless possibilities.

1759 FUNCTION SHOWN WITH 29L LEVERS AND 2R ROSE

STILE INNOVATION

1700 SERIES NARROW BACKSET LOCK

SLEEK AESTHETICS

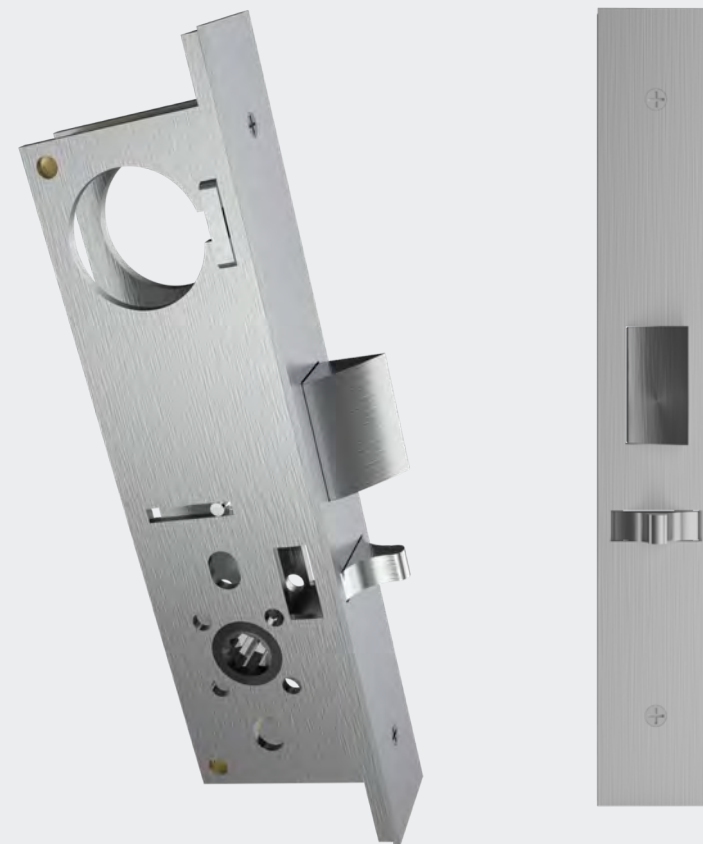
- Maintain sleek lines where narrow stile doors are prominent
- Narrow backsets including 1" and 1¹/₈" are ideal for aluminum storefront and glass wall partition systems with narrow stile framing (minimum 1⁷/₈" stile recommended)

DESIGN VERSATILITY

- Compatible with Accurate Lever Trim or custom fitted for most manufacturers' sectional lever trim (narrow roses) making trim and finish options limitless

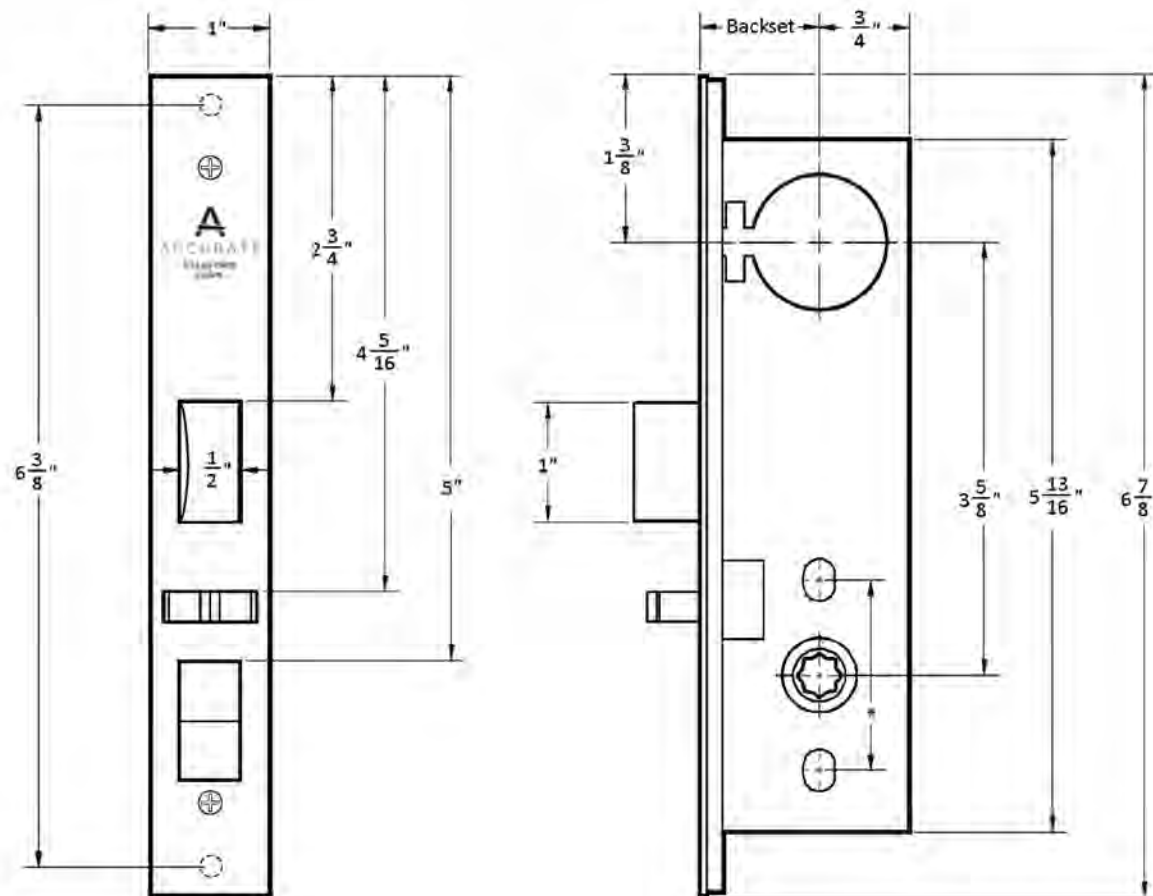
FUNCTIONALITY

- Available in a variety of latch bolt and deadbolt functions
- Can be used with standard mortise cylinders
- Features latch holdback by cylinder



1757 ENTRANCE OR OFFICE FUNCTION

1700 Series: Technical Details



*To accommodate through-bolting
1½ to 1⅞ center to center

BACKSET: 1", 1¹/₈"

CASE: Heavy gauge, stainless steel

ARMOR FRONT: Brass, bronze, aluminum or stainless steel, finished as required. Faceplate options: flat (default), radius or beveled (see How to Specify pgs. 10-11)

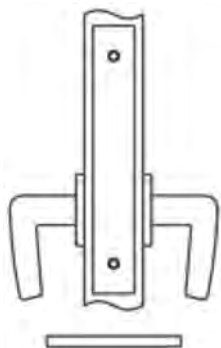
LATCH BOLT: Brass or stainless steel, solid type $\frac{1}{2}$ " throw

STRIKE: 4⁷/₈" ASA

HUBS: Available in different sizes to be compatible with various trim

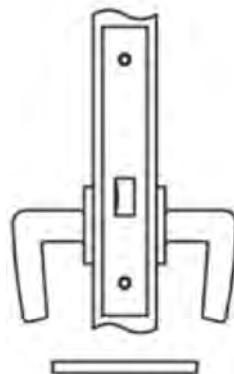
DUST BOX: Brass, stainless steel or oil rubbed bronze

1700 Series: Functions



1700ADL ACTIVE DUMMY LOCK

Active handles inside and outside

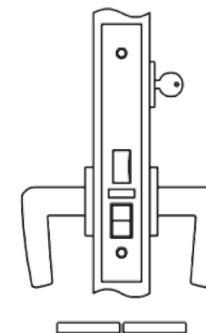


1725 PASSAGE

Latch bolt by lever either side.

Latch bolt can be held retracted by depressing, then turning key.*

**Optional, please specify 1725H*



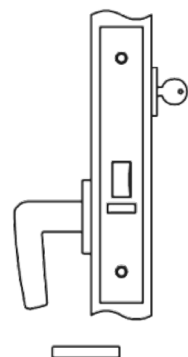
1756 ENTRANCE OR OFFICE

Latch bolt by key outside and lever either side unless outside lever is locked by toggle-action stop.

Auxiliary latch deadlocks latch bolt.

Latch bolt can be held retracted by depressing, then turning key.*

**Optional, please specify 1756H*



1757 ENTRANCE OR OFFICE

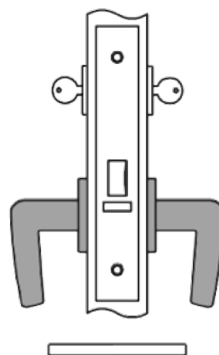
Latch by lever inside and key outside.

No outside lever.

Auxiliary latch deadlocks latch bolt.

Latch bolt can be held retracted by depressing, then turning key.*

**Optional, please specify 1757H*



1758 INSTITUTION OR ASYLUM

Latch by key either side.

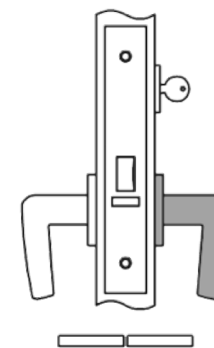
Inside and outside levers always **rigid**.*

Auxiliary latch deadlocks latch bolt.

Latch bolt can be held retracted by depressing, then turning key.**

**Verify code compliance before using this function*

***Optional, please specify 1758H*



1759 STOREROOM OR CLOSET

Latch by lever inside and key outside.

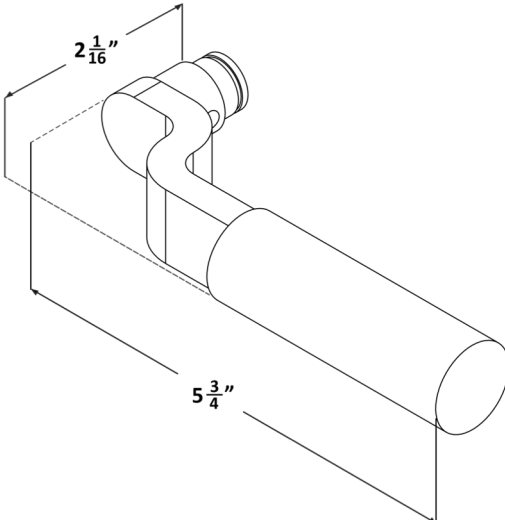
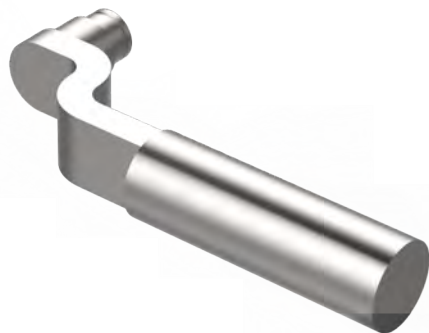
Outside lever always **rigid**.

Auxiliary latch deadlocks latch bolt.

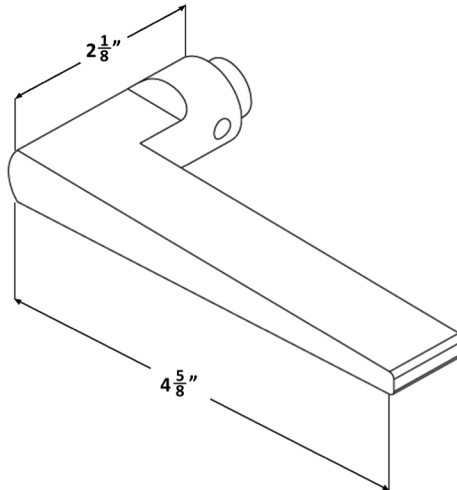
**Optional, please specify 1759H*

ACCURATE LEVER TRIM OPTIONS

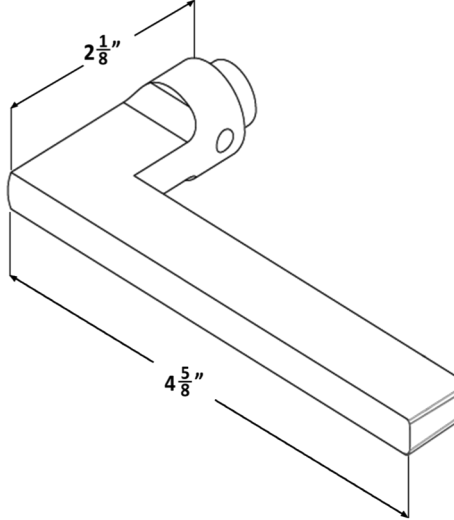
17L LEVER



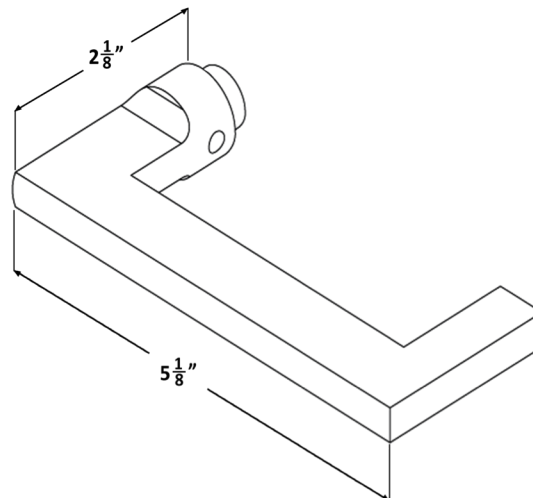
18L LEVER



19L LEVER

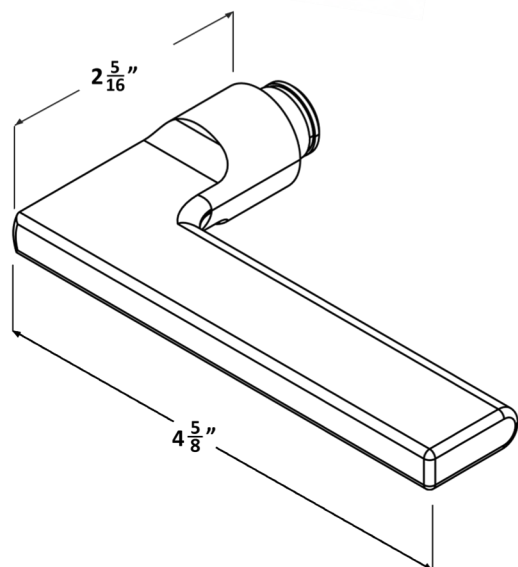


20L LEVER

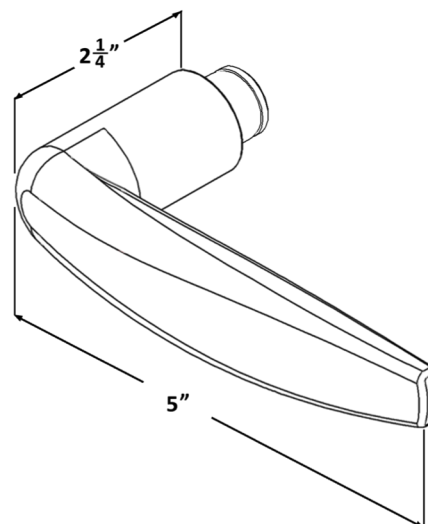


ACCURATE LEVER TRIM OPTIONS

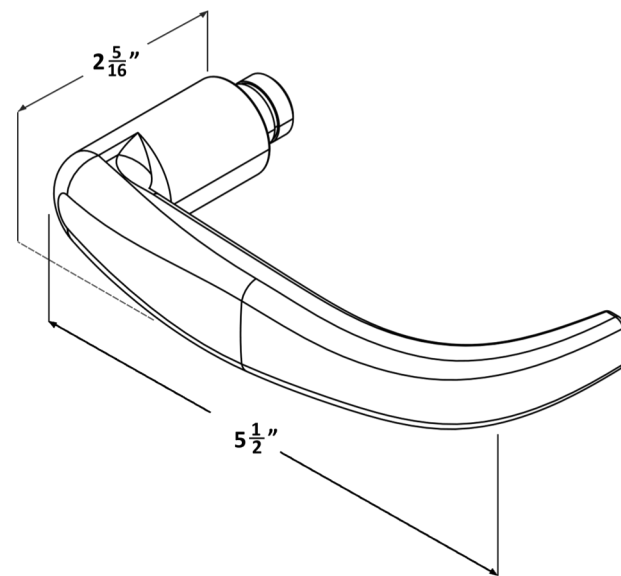
21L LEVER



29L LEVER

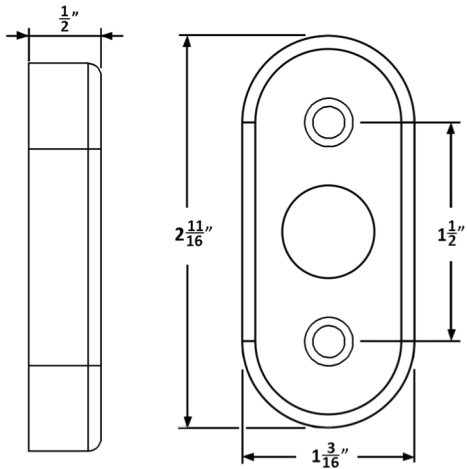
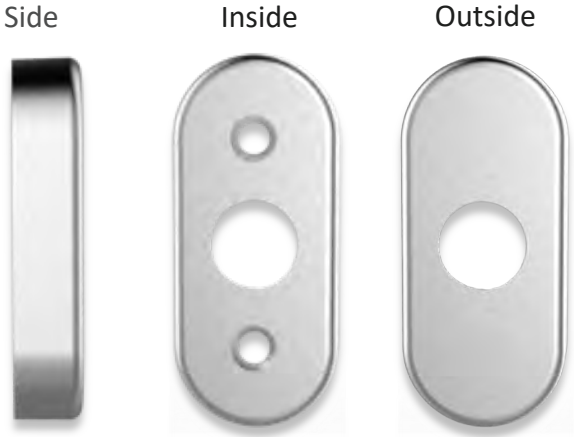


39L LEVER

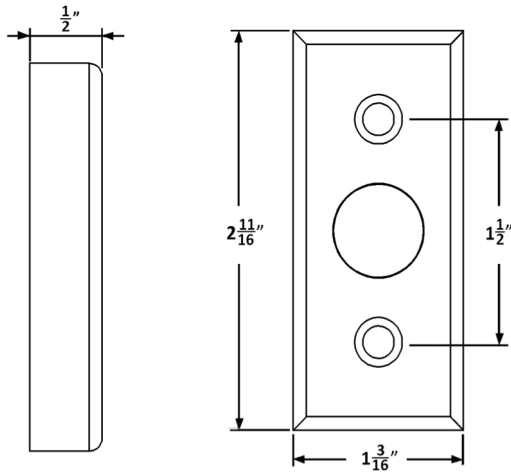
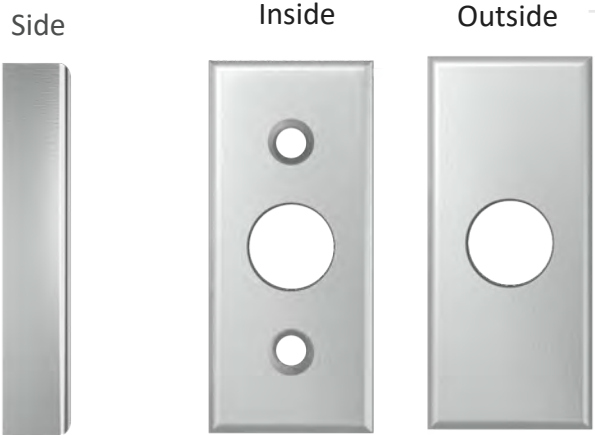


ACCURATE TRIM OPTIONS

2R ROSE



4R ROSE

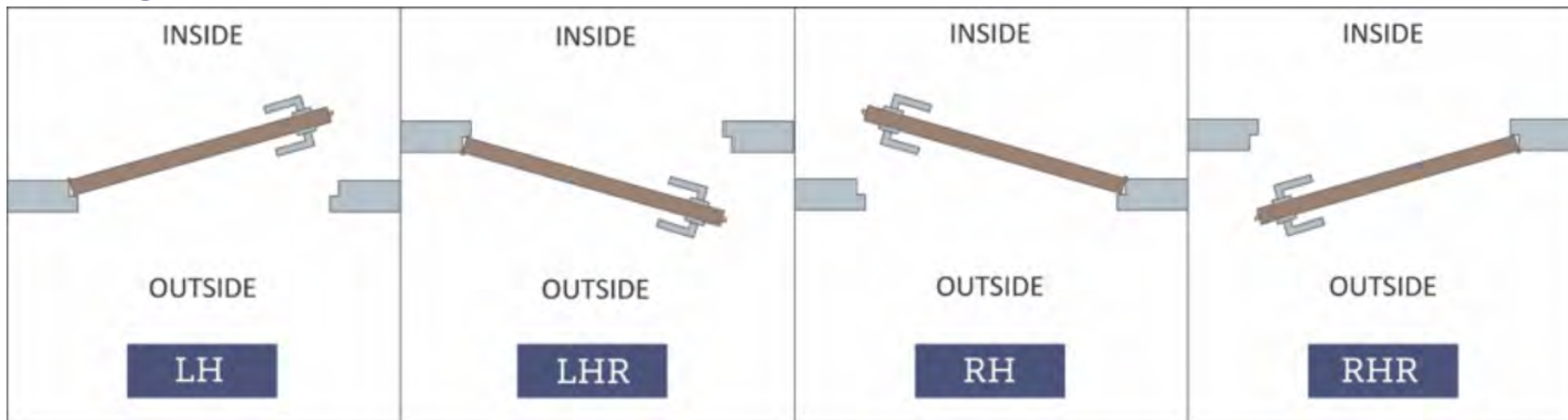


STANDARD
29L LEVER/2R ROSE SET



HOW TO SPECIFY

HANDING



FINISHES

GROUP 1: US4, US4NL, US32D*, US26D

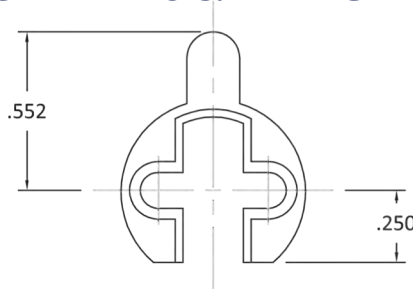
GROUP 2: US3, US3NL, US26, US32*, US9*, US10*, US10B, US14, US15, US19

GROUP 3: BN, BB, TN, TB, DURO, ESN, US15A, US5

* Trim options (including Accurate Levers) may not be available in US32D, US32, US9, or US10 finish. Please call for assistance.

To view example of finishes visit: [Accurate Finishes](#).

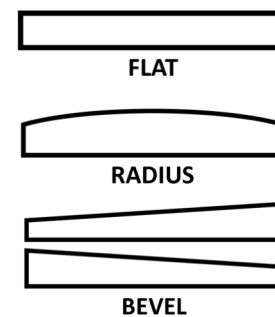
CYLINDERS & KEYING



1700 Series locks accept any standard American mortise cylinder. For details on required cams and compatibility with other manufacturers' cylinders, please visit: [Accurate Support](#).

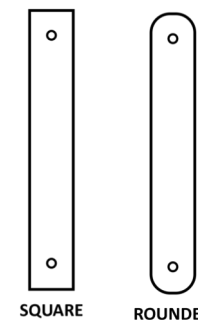
FACEPLATE

FACEPLATE EDGE



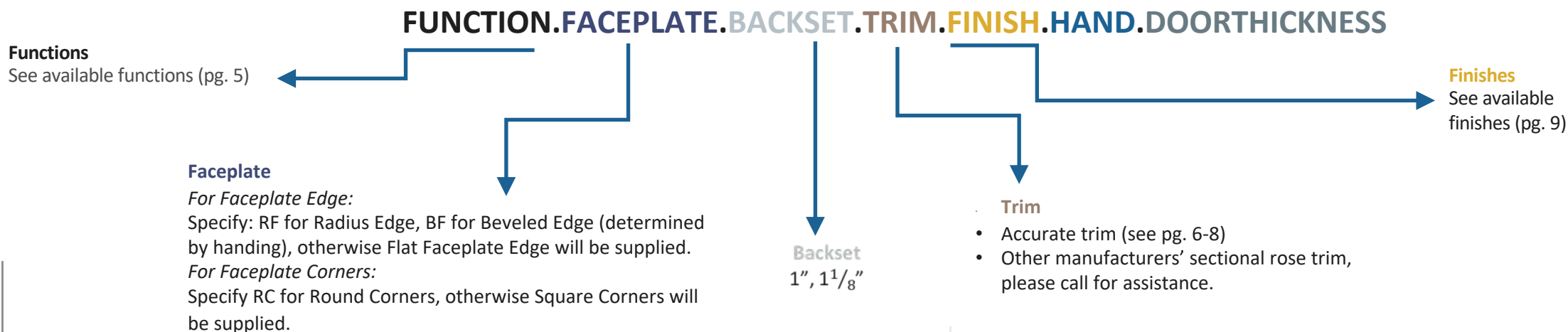
Flat Faceplate Edge furnished unless otherwise specified. Bevel Faceplate determined by handing.

FACEPLATE CORNERS



Square Faceplate Corners furnished unless otherwise specified.

HOW TO SPECIFY



EXAMPLES

Office Lock | Radius Faceplate Round Corners | Accurate Trim

E.g.: 1756.**RFRC.1.29L/2R.US26D.RH.134**

Storeroom Lock | Flat Faceplate Round Corners | Accurate Trim

E.g.: 1759.**RC.1.29L/2R.US26D.RH.134**

Entry Lock | Beveled Faceplate Square Corners | Other Manufacturers' Trim*

E.g.: 1757.**BF.1125.8mm.US26D.RH.138**

Passage Lock with Hold Back | Flat Faceplate Round Corners | Other Manufacturers' Trim*

E.g.: 1725H.**RC.1125.7mm.US3NL.RH.138**

CUSTOM OPTIONS AVAILABLE

- Set up for levers by other manufacturers
- Sliding door functionality
- Glass Patch Narrow Backset Locks (G17)

Please [contact us](#) for assistance

Cylinders are not included. Please specify separately.

**Note: For compatibility with other manufacturers' trim please call for assistance.*



Also available.. G17 GLASS PATCH

FOR NARROW STILE GLASS DOORS

Offered as a completed package including lock body, thumb turn, patch assembly and levers. Available in a range of finishes and functions.

Please contact us for more information.

**ACCURATE LOCK & HARDWARE
MANUFACTURERS OF LOCKS AND
CUSTOM ARCHITECTURAL HARDWARE**

1 Annie Place | Stamford, CT 06902

P: 203.348.8865

F: 203.348.5234

E: sales@accuratelockandhardware.com

www.accuratelockandhardware.com

AMERICAN CRAFTSMAN
— SINCE 1972 —