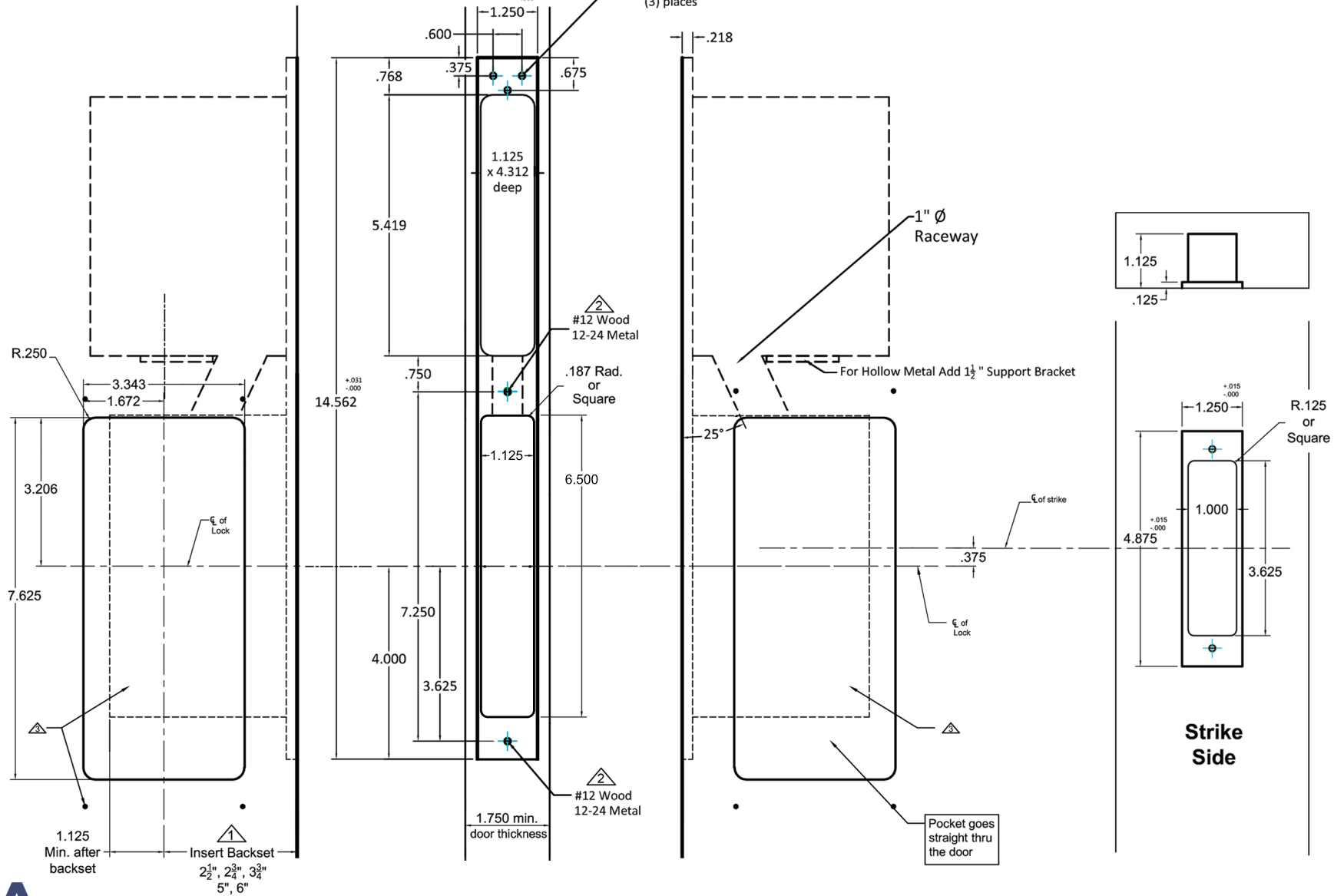


**INSIDE OF DOOR**

**OUTSIDE OF DOOR**



**Notes:**

- △ Insert backset here 2 1/2", 2 3/4", 3 3/4", 5", or 6"
- △ Prep for #12 wood or 12-24 machine screws
- △ After the lock is installed and works properly. Pre-drill screw holes for the flush pulls. Then mount the flush pulls with the provided screws

**Additional Notes:**

- a) **Responsibility:** Door and frame manufacturers are responsible for providing
- adequate construction or re-inforcement for proper installation of hardware shown.
- c) See catalog / spec sheets for additional lock details



SmartEntry SL-SM9159E.PDL Template-  
All Backsets

T-ALH.SL-SM9159E.PDL