



# SMARTENTRY™

by ACCURATE

SmartEntry™ SM9159E Series Smartphone Mortise Lock

SECURE, CONVENIENT, DESIGN DRIVEN

# SMARTENTRY™

by ACCURATE

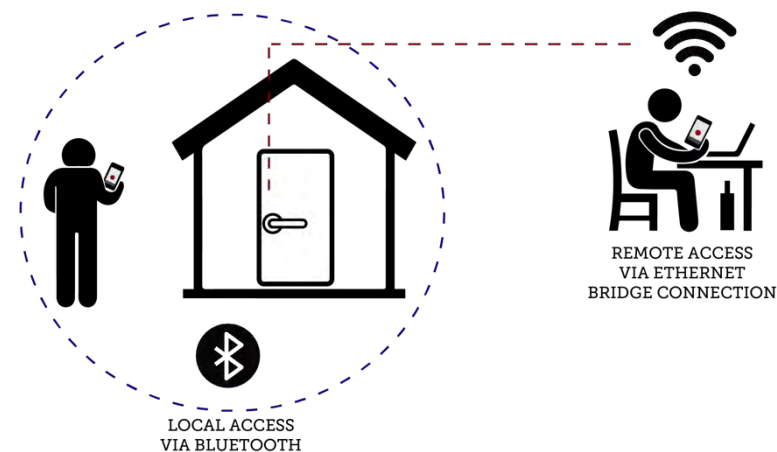
## SM9159E SMART MORTISE LOCK

One of the first smartphone-operated systems for mortise locks, the SM9159E combines Accurate's mechanical expertise with industry leading technology. The battery-powered smartlock features keyless entry via Bluetooth® communication that is controlled by a proprietary app for ease and convenience. Keeping design top of mind, this lock is compatible with any style trim and has no exposed electronics.

### PRODUCT + BENEFITS

- All components hidden inside mortise pocket
- Fully customizable – pair with virtually any style architectural trim
- Battery powered for easy installation. Door does not require any wiring
- Lock and unlock the door and grant keyless entry via smartphone app

### HOW IT WORKS





# SMARTENTRY™

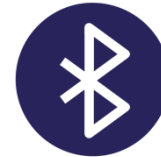
by ACCURATE



iOS + Android compatible



Control lock remotely from anywhere in the world



Local access via Bluetooth®



Compatible with standard trim configurations (LxL, TPxK, etc.)

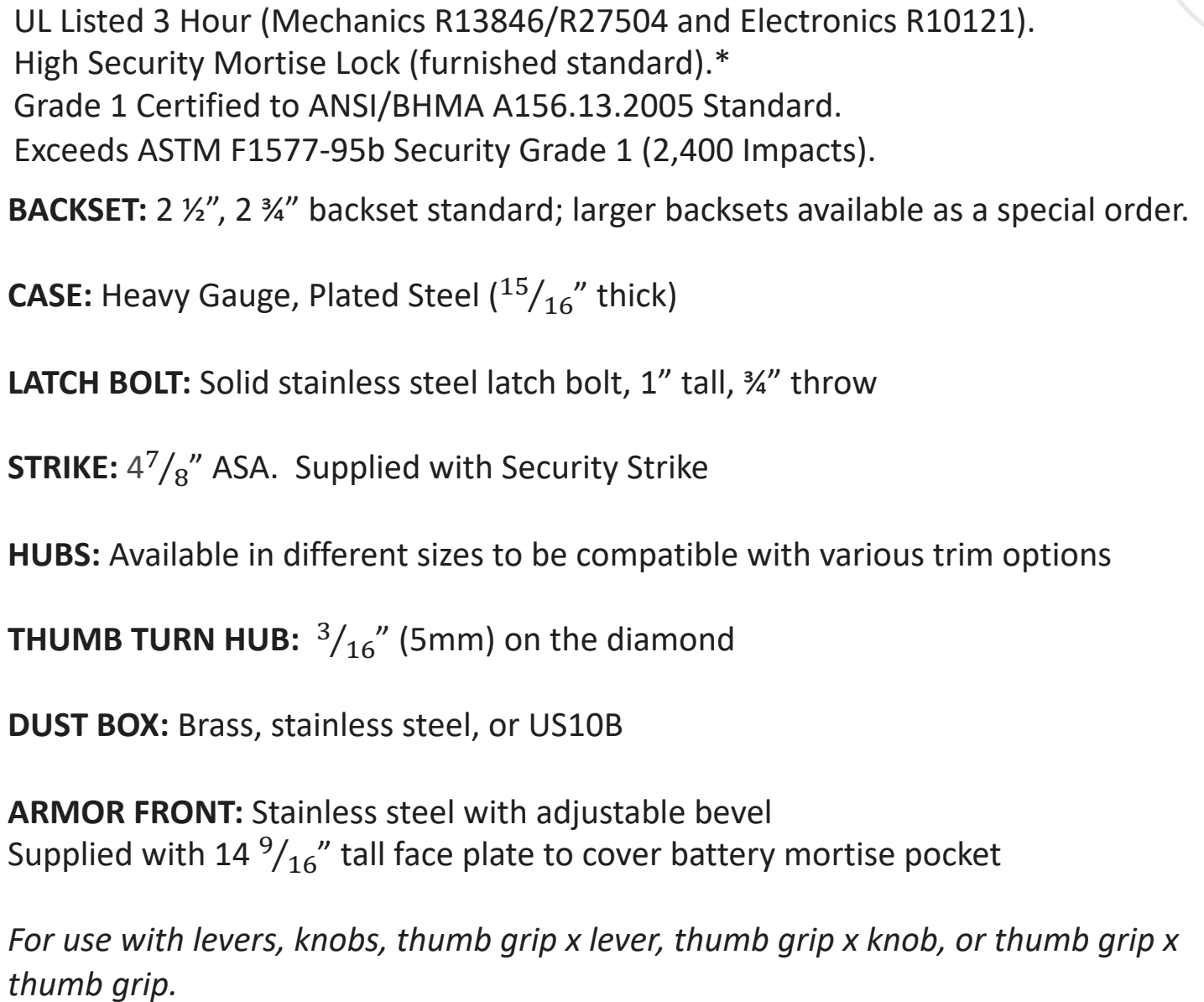


Admin can provide access to up to 25 users 24/7 or on a schedule



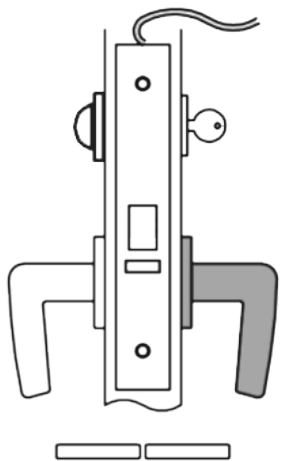
Battery operated with app indicator





11		10		9		8		7		6		5		4		3		2		1
----	--	----	--	---	--	---	--	---	--	---	--	---	--	---	--	---	--	---	--	---

# SM9159E Series | Operation



## OUTSIDE:

Latch by lever outside after handle is unlocked with smart phone or fob. Outside lever remains unlocked unless user changes settings to have the lever automatically re-lock. If Outside handle is unlocked, phone or fob used to re-lock. If lock is electronically disabled (Secure Mode) on home screen or in settings, outside lever automatically locks and latch bolt can only be retracted by key. When lock is in Secure Mode, outside lever will remain locked at all times.

## INSIDE:

Latch by lever inside always. When inside lever retracts latch, outside lever unlocks (similar to 9124) unless user changes settings to have lever automatically re-lock (similar to 9148). Rotating thumb turn locks the outside handle and thumb turn springs back to home position. Thumb turn will NOT unlock the outside lever.

## STATUS:

Latch bolt monitor- confirms that latch bolt is fully projected

Stop bar monitor- confirms that outside handle is locked

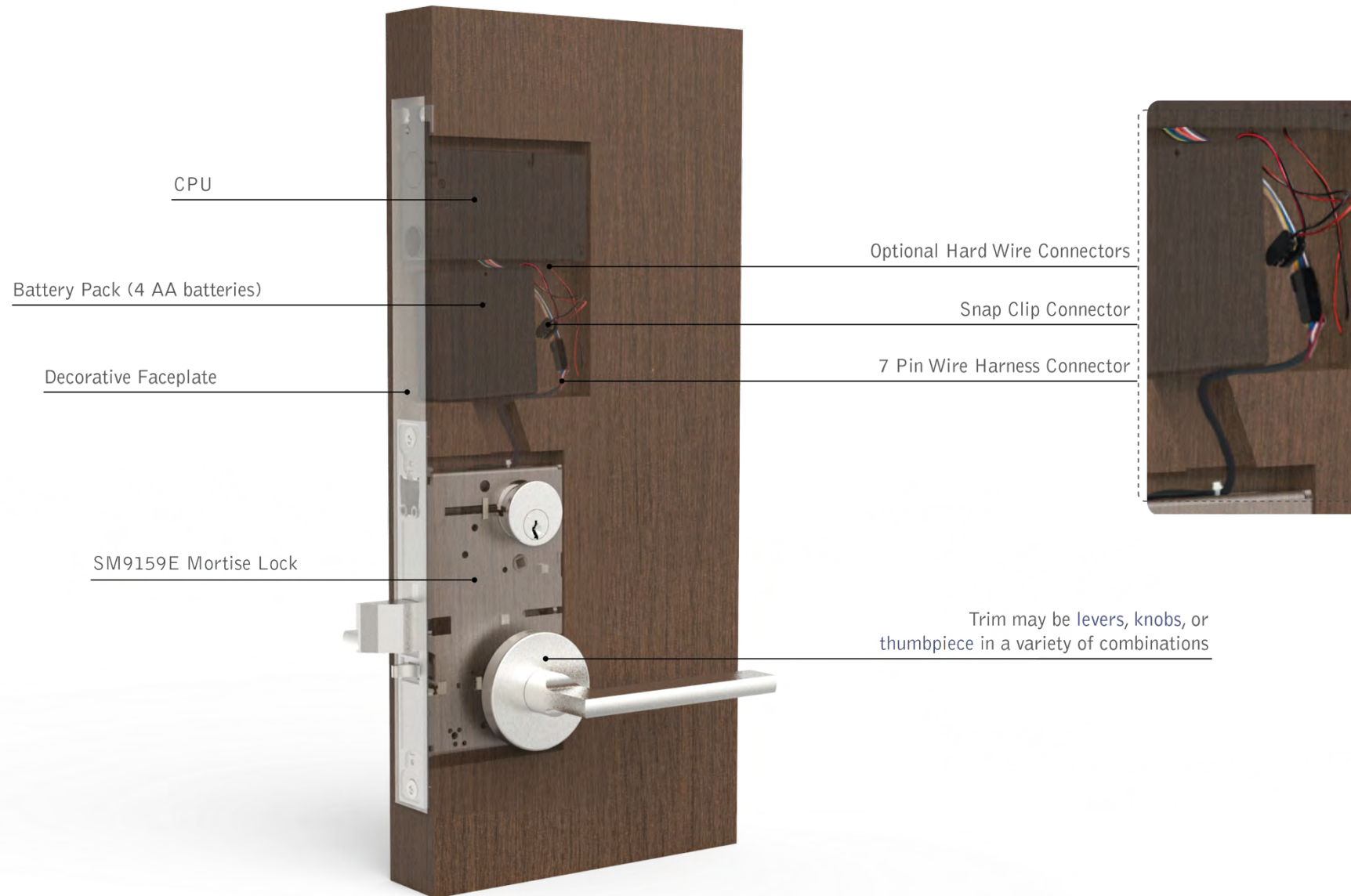
## GENERAL NOTES:

System uses Bluetooth when in proximity and Ethernet Bridge when remote.

Lock operated by 4 AA batteries with low battery warning in app. To replace the batteries simply remove armor plate on edge of door and access the battery pack.

Lock can also be powered with traditional hard wired power supply up to 24 volts. Please specify if you are using it this way.

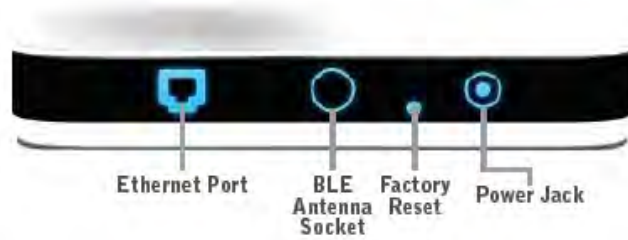
# SM9159E Series | Components



# SM9159E Series | Components

## SUPPLIED STANDARD

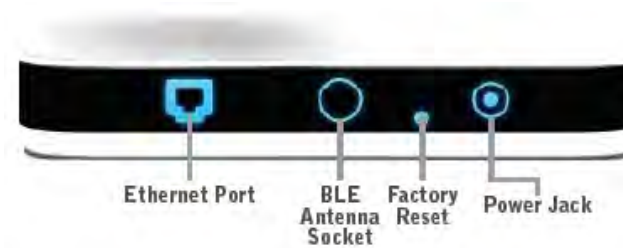
### ETHERNET BRIDGE



Includes:

- Ethernet Cable (3 feet long)
- BLE Antenna
- Power Supply 5V@1A
- Product Information Label

### RANGE EXTENDER



Includes:

- BLE Antenna
- Power Supply 5V@1A
- Product Information Label



# SM9159E Series | Optional Components

Available as optional accessories for an additional charge, please contact your local distributor.

## SMARTENTRY KEYFOB

(SM-FB)

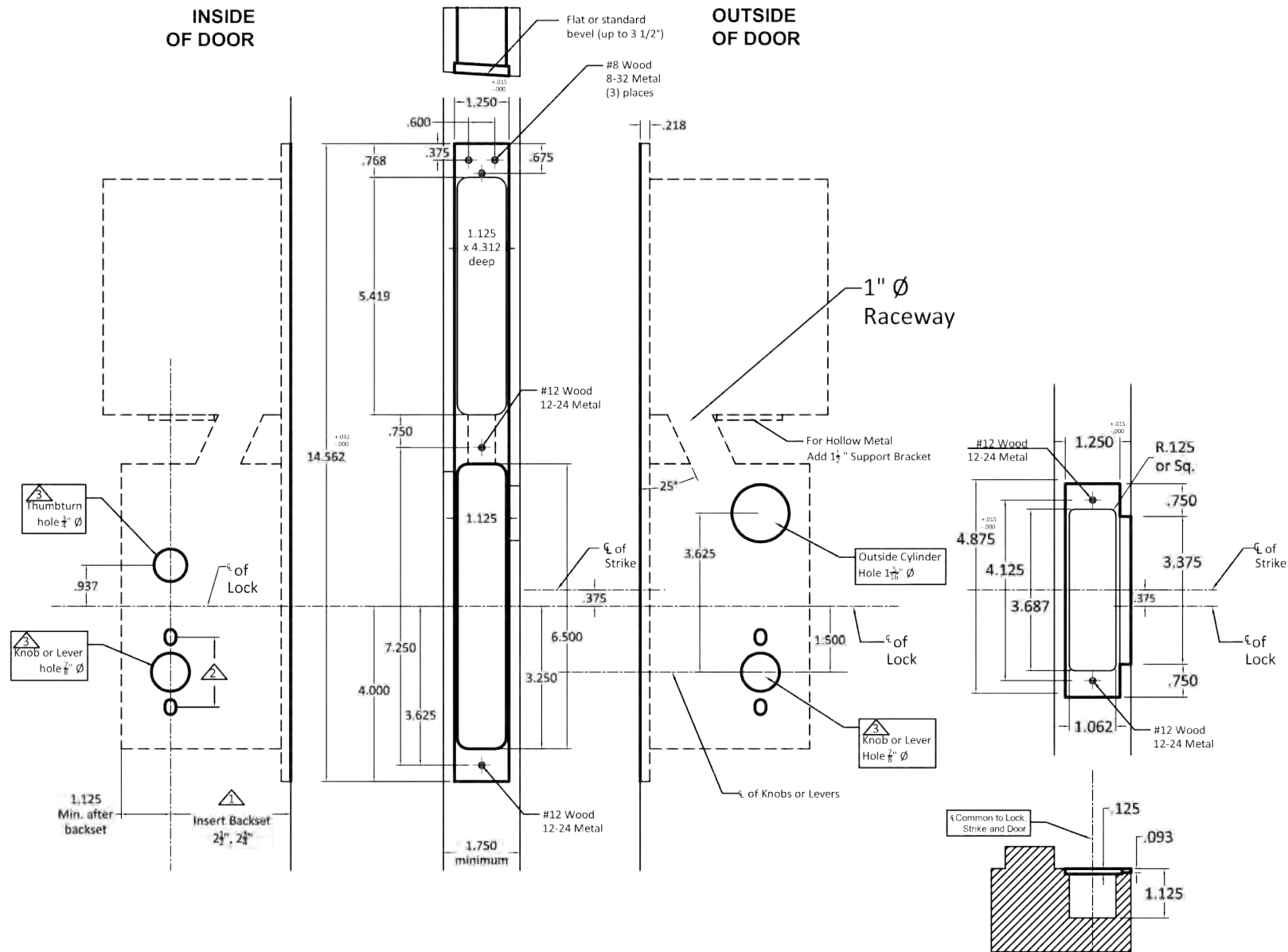


## SMARTENTRY KEYPAD

(SM-KP)







# ACCURATE LEVER TRIM OPTIONS

18L LEVER



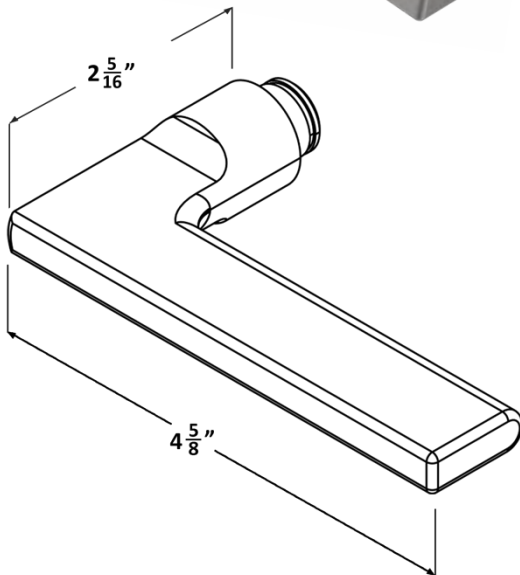
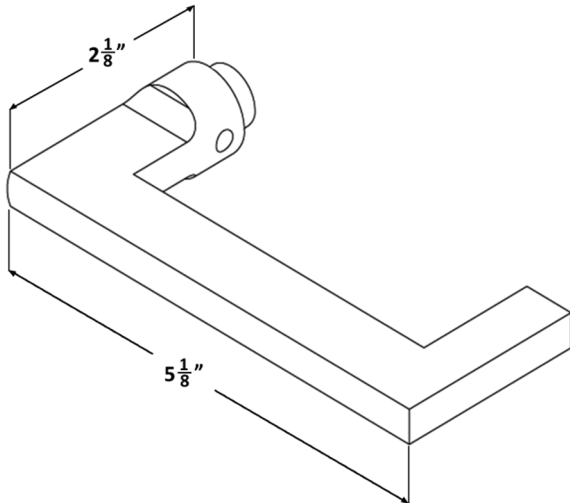
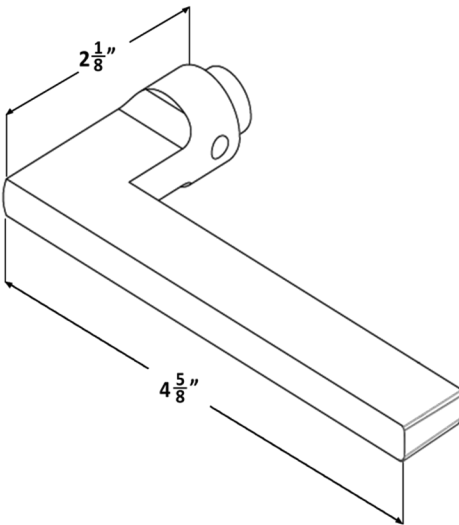
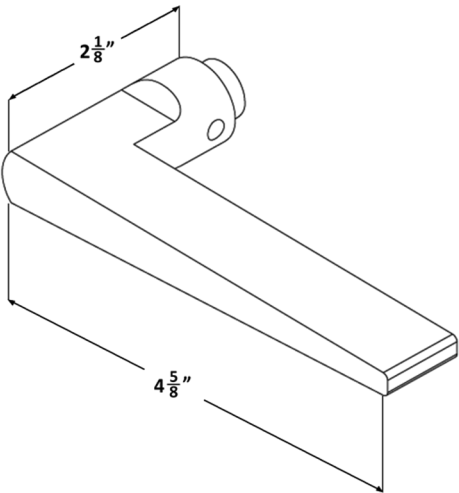
19L LEVER



20L LEVER

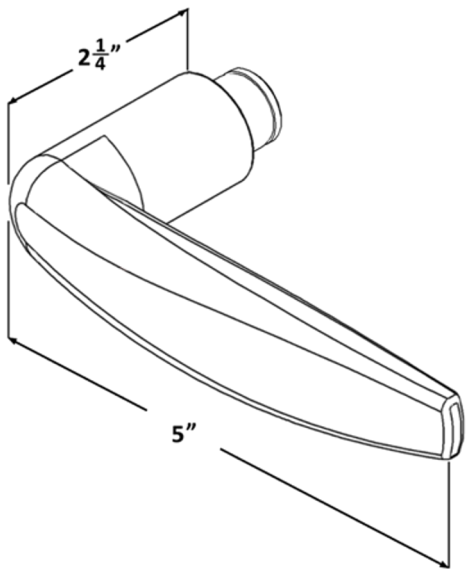


21L LEVER

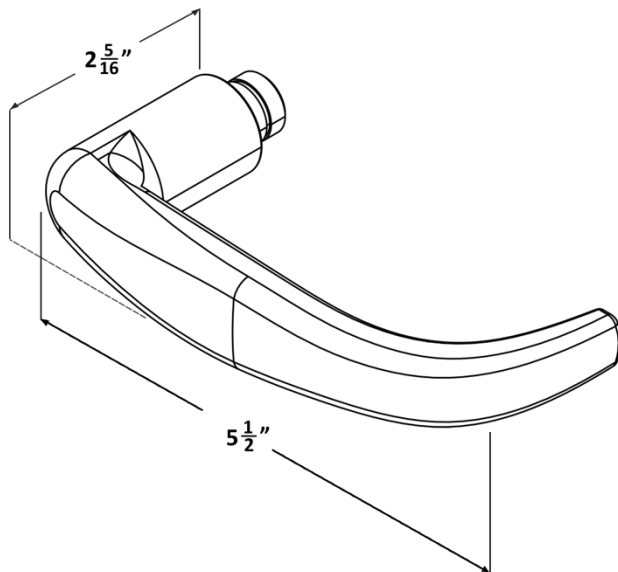


# Accurate Lever Trim Options

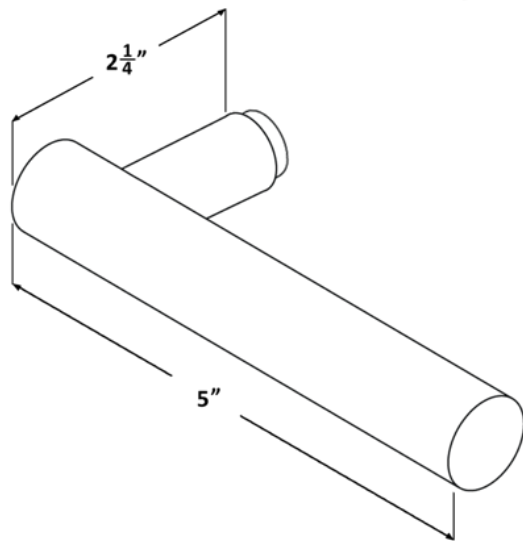
29L LEVER



39L LEVER



72L LEVER

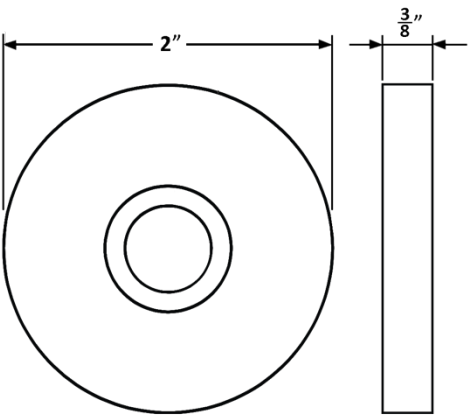


# Accurate Sectional Trim: Roses

1R ROSE

Front

Side



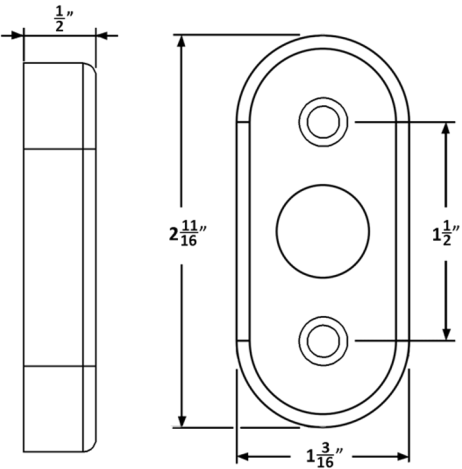
SILENTPAC™ LEVER DAMPENING DISC CAN BE SPECIFIED WITH THE 1R ROSE  
VISIT [SILENTPACSOLUTIONS.COM](https://www.silentpacsolutions.com)

2R ROSE

Side

Inside

Outside

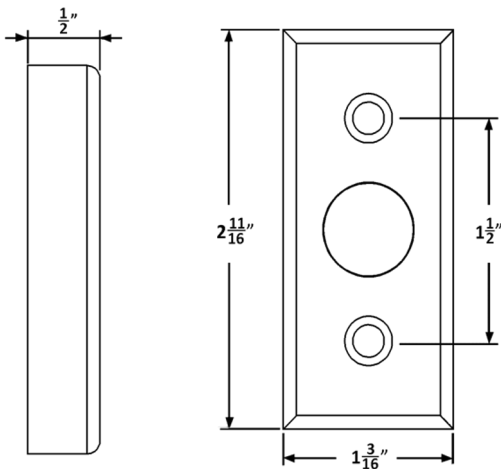


4R ROSE

Side

Inside

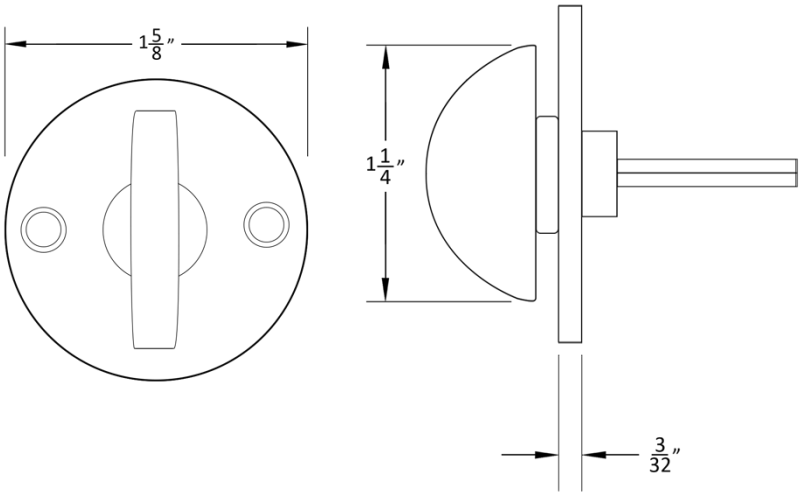
Outside



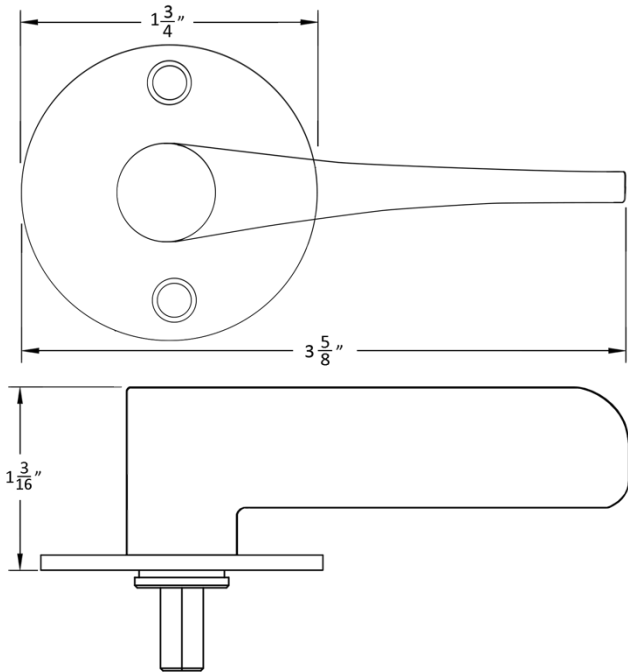


# Accurate Sectional Trim: Thumb Turns

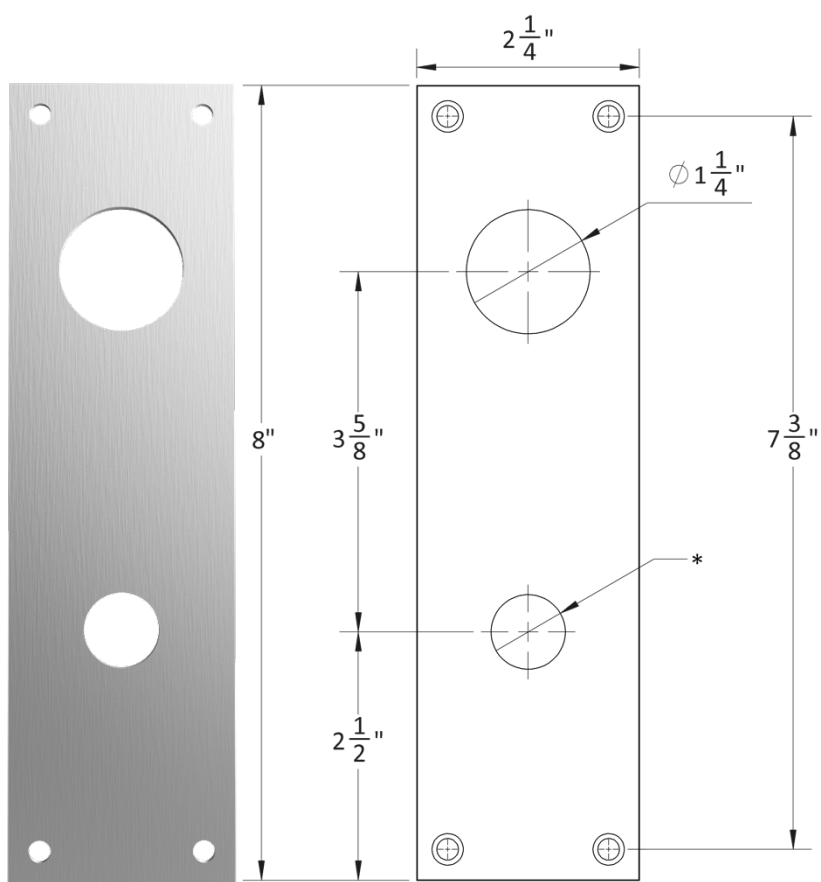
GF1106



7200ADA



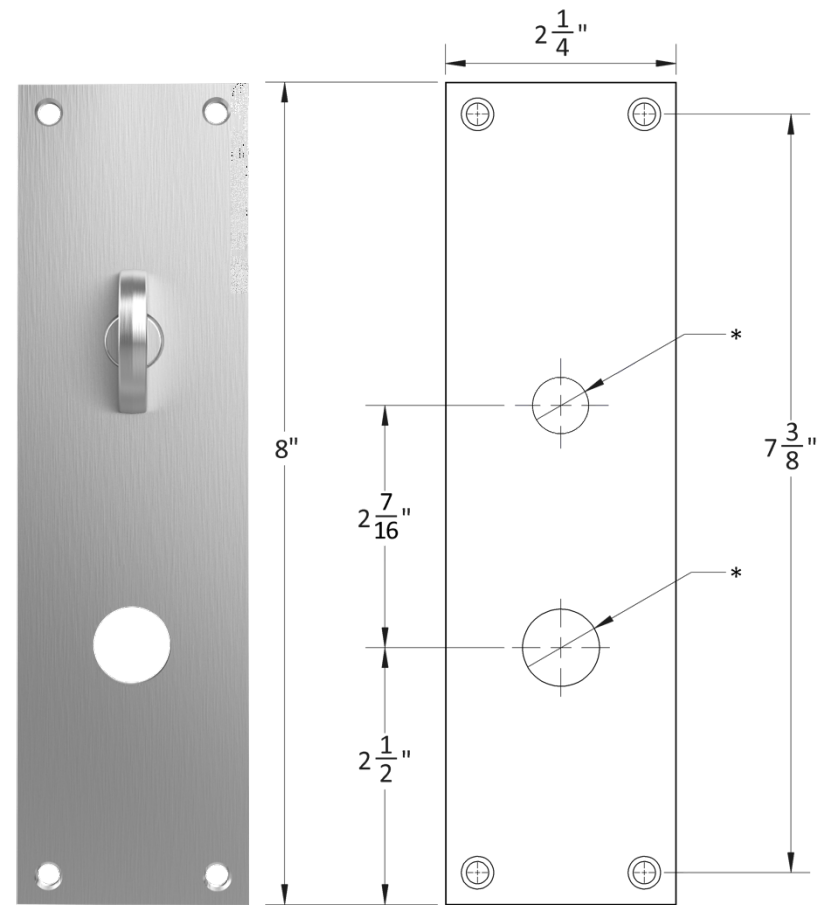
# Accurate Escutcheons: 1E-C x 1E-T



**1E-C**

Cylinder  
Cutout

\* Dimensions may vary depending on trim



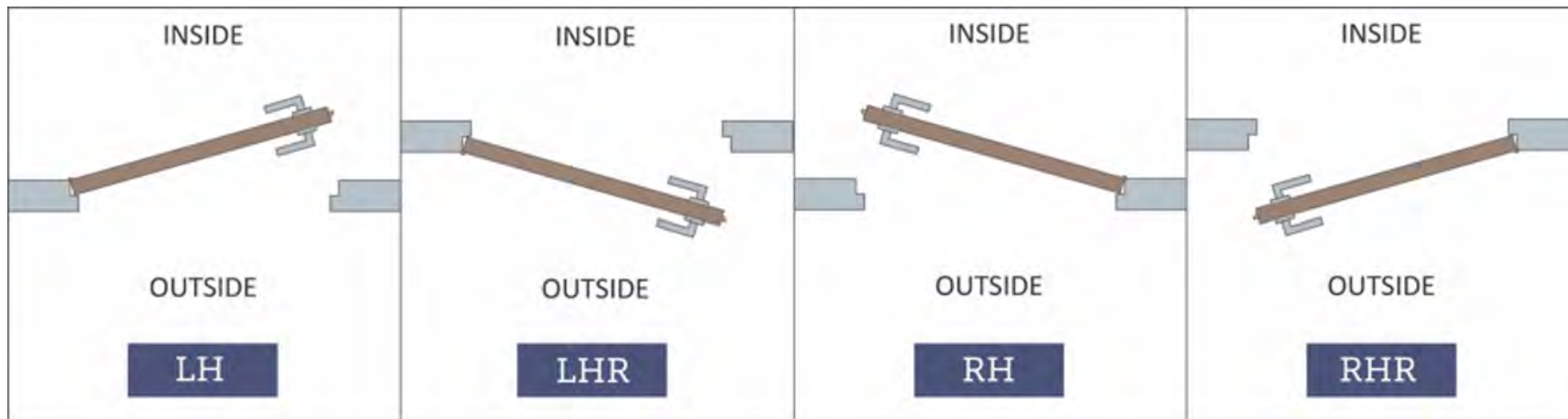
**1E-T**

Thumb Turn

\* Dimensions may vary depending on trim

# HOW TO SPECIFY

## HANDING



## FINISHES

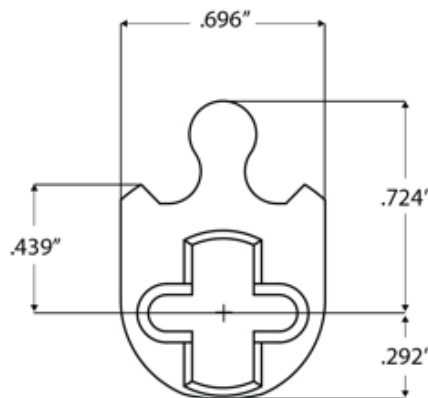
**GROUP 1:** US4, US4NL, US32D\*, US26D

**GROUP 2:** US3, US3NL, US26, US32\*, US9\*, US10\*, US10B, US14, US15, US19

**GROUP 3:** BN, BB, TN, TB, DURO, ESN, US15A, US5

\* Trim options (including Accurate Levers) may not be available in US32D, US32, US9, or US10 finish. Please call for assistance.

To view example of finishes visit: [Accurate Finishes](#).

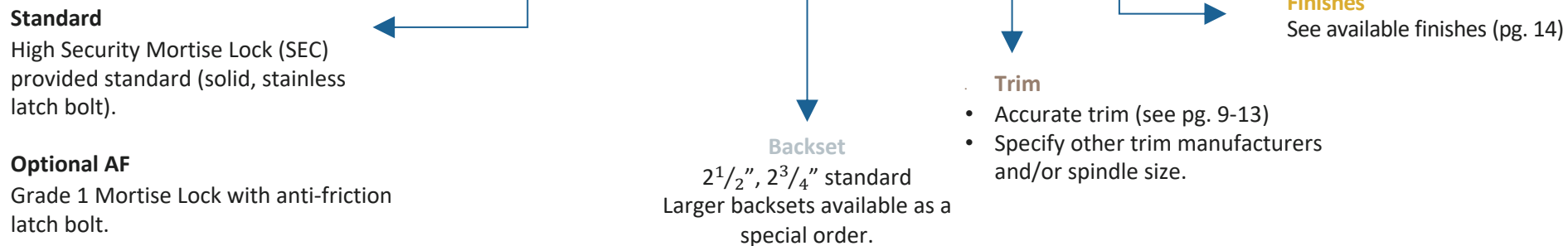


## CYLINDERS & KEYING

SM9159E Series locks accept any standard American mortise cylinder. For details on required cams and compatibility with other manufacturers' cylinders, please visit: [Accurate Support](#).

# HOW TO SPECIFY

SM9159E-SEC.BACKSET.TRIM.FINISH.HAND.DOORTHICKNESS



## EXAMPLES

### SmartEntry Lock | Accurate Trim

E.g.: SM9159E-SEC.212.29L/1R.US19.RH.134

### SmartEntry Lock (Grade 1) | Accurate Trim

E.g.: SM9159E-AF.212.29L/1R.US19.RH.134

### SmartEntry Lock | Other Manufacturers' Sectional Trim\* | 2 ¼" Thick Door

E.g.: SM9159E-SEC.234.LxL 8mm.US4.LH.214

\*Note: Please call for assistance when using escutcheon trim

## SPECIAL OPTIONS AVAILABLE

- USD K x K Upside Down (cylinder/thumb turn below knobs)
- USD L x L Upside Down (cylinder/thumb turn below levers)



**ACCURATE LOCK & HARDWARE  
MANUFACTURERS OF LOCKS AND  
CUSTOM ARCHITECTURAL HARDWARE**

1 Annie Place | Stamford, CT 06902

**P:** 203.348.8865

**F:** 203.348.5234

**E:** [sales@accuratelockandhardware.com](mailto:sales@accuratelockandhardware.com)

**[www.accuratelockandhardware.com](http://www.accuratelockandhardware.com)**

**AMERICAN CRAFTED  
— SINCE 1972 —**