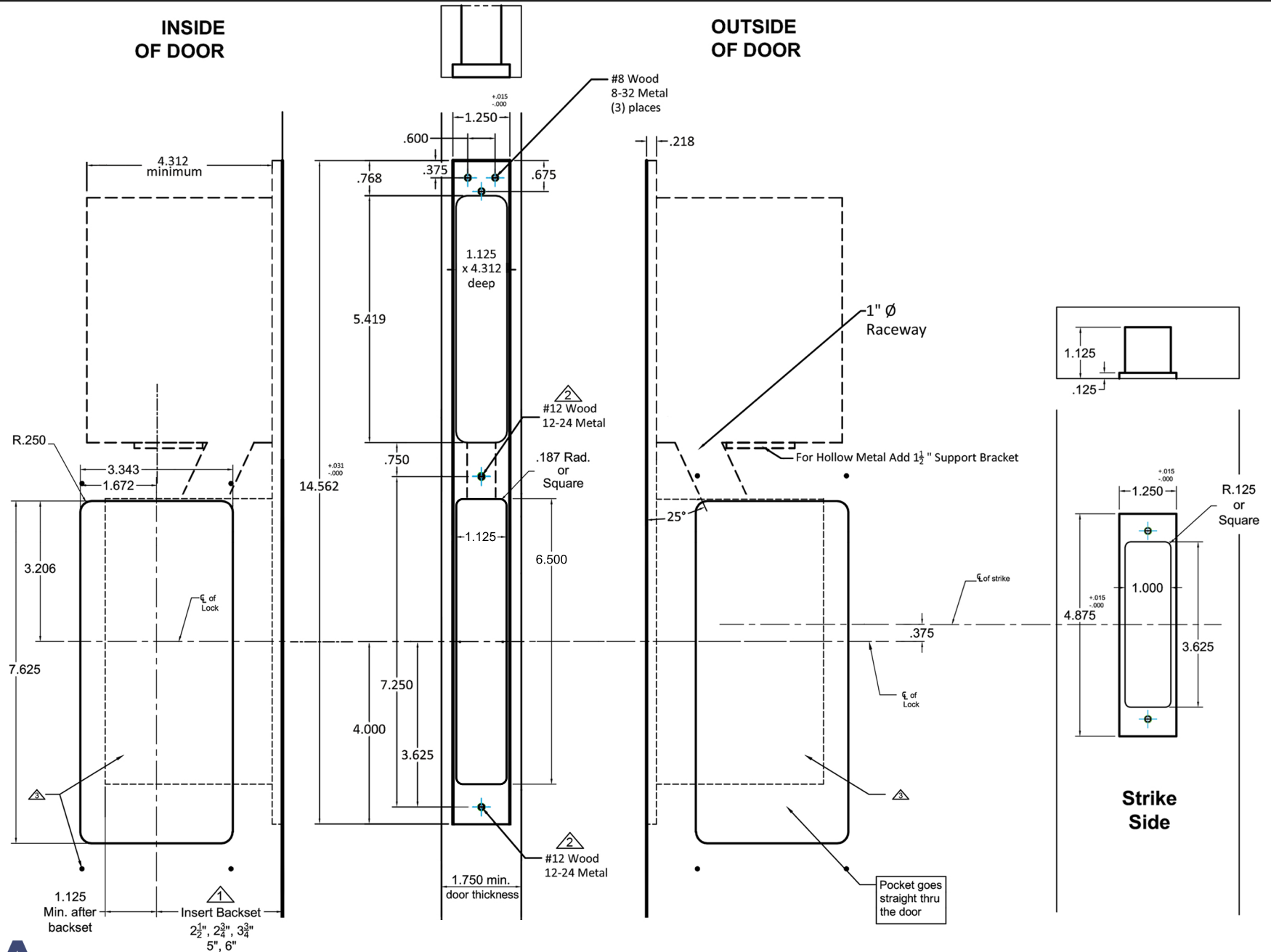


**INSIDE
OF DOOR**

**OUTSIDE
OF DOOR**



Notes:

- ▲ Insert backset here $2\frac{1}{2}"$, $2\frac{3}{4}"$, $3\frac{3}{4}"$, 5", or 6"
- ▲ Prep for #12 wood or 12-24 machine screws
- ▲ After the lock is installed and works properly. Pre-drill screw holes for the flush pulls. Then mount the flush pulls with the provided screws

Additional Notes:

- a) **Responsibility:** Door and frame manufacturers are responsible for providing
- adequate construction or re-inforcement for proper installation of hardware shown.
- c) See catalog / spec sheets for additional lock details



SmartEntry SL-SM9159E.PDL Template-
All Backsets

T-ALH.SL-SM9159E.PDL