



ACCURATE

LOCK & HARDWARE

AMERICAN CRAFTED SINCE 1972

GR86 RABBETED GLASS PATCH HARDWARE SETS

FOR OFFSET GLASS APPLICATIONS

A SLEEK SPECIALTY GLASS SOLUTION

GR86 SERIES

This rabbeted glass patch kit is designed for offset on-glass applications with privacy gasketing. The GR86 is offered as a complete package including lock body, patch assembly and levers, compatible with US mortise cylinders.



GR8656 RABBETED GLASS PATCH WITH 18L LEVERS

GR86 Series

RABBETED GLASS PATCH HARDWARE SETS

- Maintain sleek, modern aesthetic where glass doors are prominent
- Compatible with various partition system configurations
- For inswing and outswing doors that utilize proprietary framing
- Standard set up is for a 1 1/2" backset lockset on 1/2" thick tempered glass
- Quick and simple door prep and installation

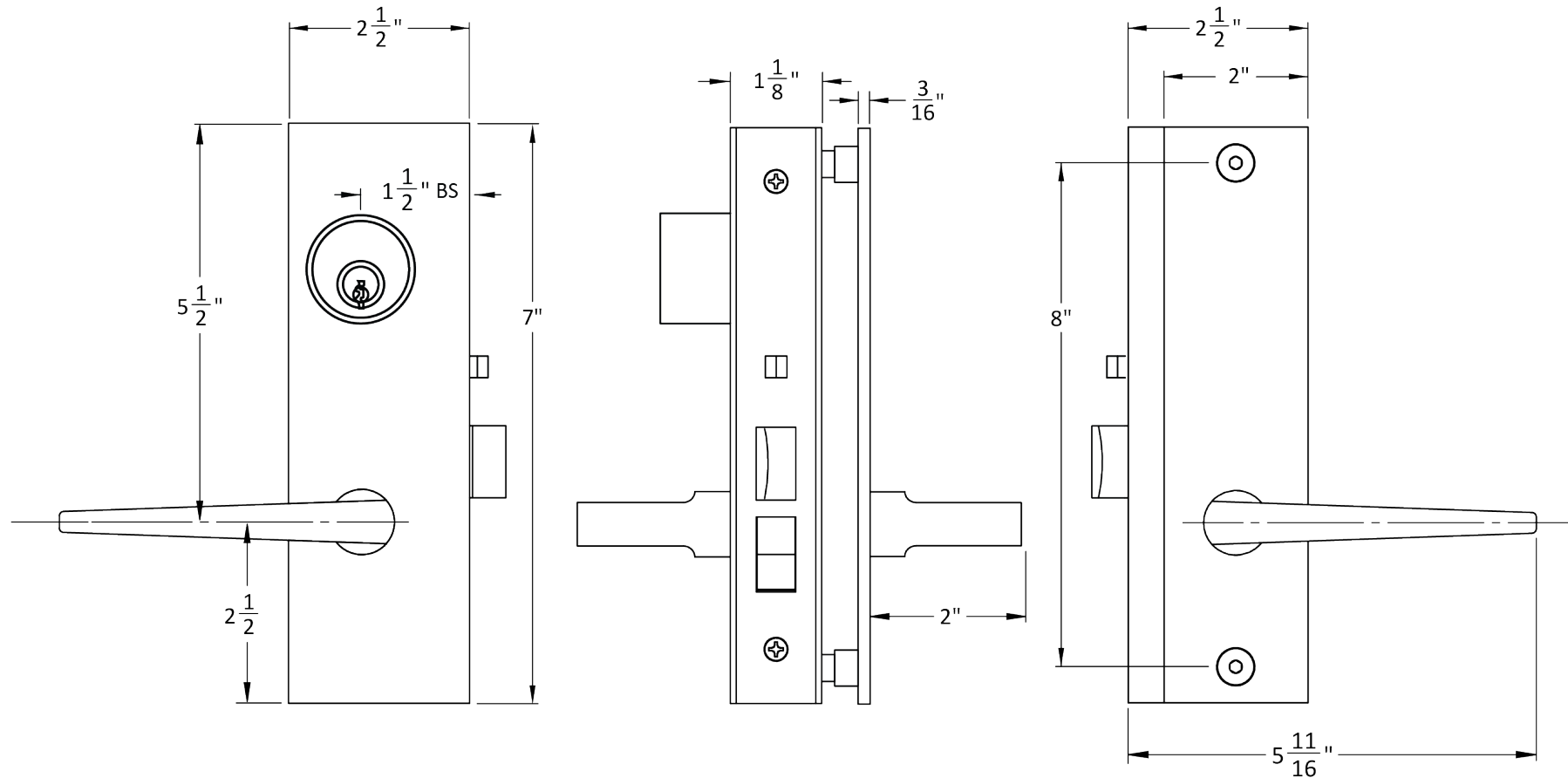


INSIDE

OUTSIDE

**GR8656 FUNCTION
SHOWN ON RH DOOR**

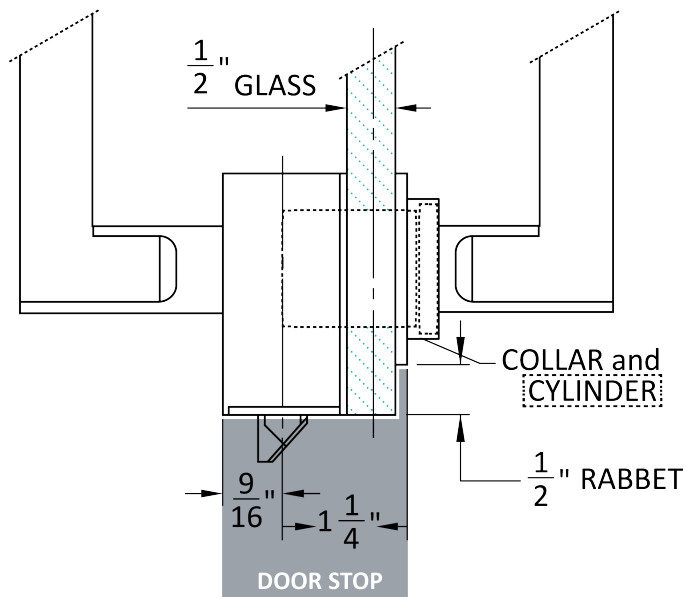
GR86 Rabbeted Glass Patch Dimensions



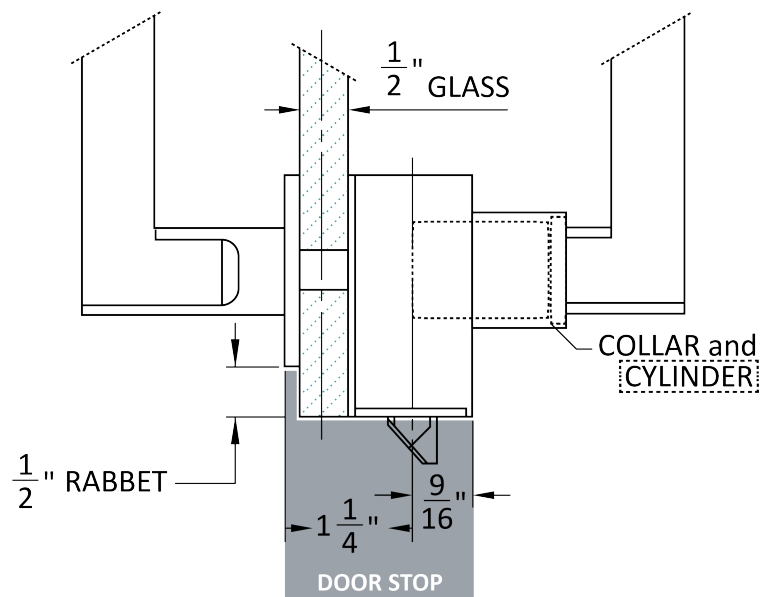
GR8656 ENTRANCE FUNCTION WITH 18L LEVERS
(other levers available)

GR86 Rabbeted Glass Patch Dimensions

INSWING
1-1/2" Cylinder Length
3/8" Collar



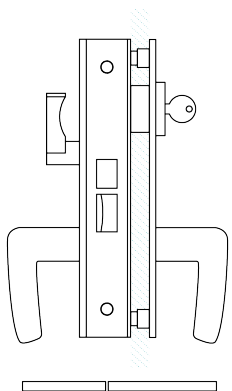
OUTSWING
1-1/2" Cylinder Length
1" Collar



CYLINDER GUIDELINES

Cylinder Length	Collar Size	
	Inswing	Outswing
3/4"	N/A	3/8"
1"		1/2"
1-1/8"		5/8"
1-1/4"		3/4"
1-3/8"	1/8"	7/8"
1-1/2"	3/8"	1"

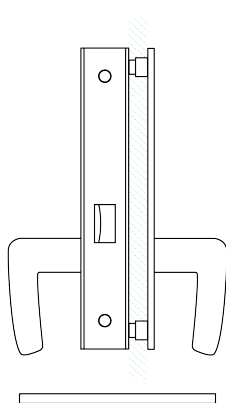
GR86 Series Functions



GR8624 ENTRANCE

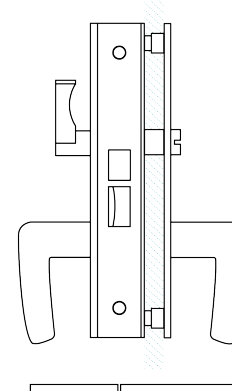
Latch bolt by lever either side.

Deadbolt by key outside and turn piece inside.



GR8625 PASSAGE

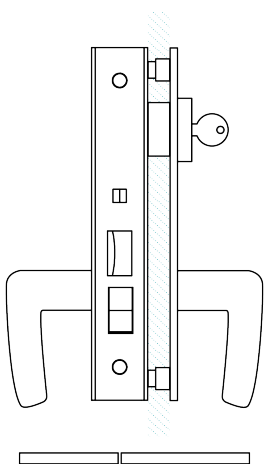
Latch bolt by lever either side.



GR8639 PRIVACY

Latch bolt by lever either side.

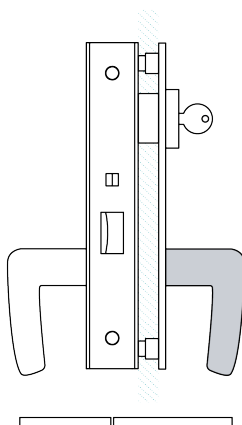
Deadbolt by turn piece inside and optional emergency key outside.



GR8656 ENTRANCE OR OFFICE

Latch bolt by key outside and handle either side unless outside handle is locked by toggle-action stop.

Auxiliary latch deadlocks latch bolt.



GR8659 STOREROOM

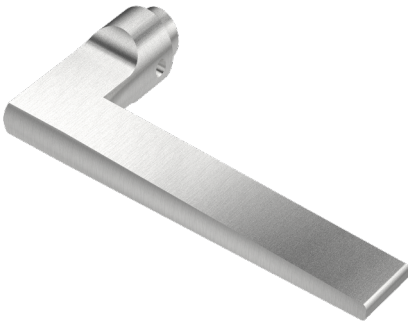
Latch by handle inside and key outside.

Outside handle always rigid.

Auxiliary latch deadlocks latch bolt.

Accurate Lever Trim Options

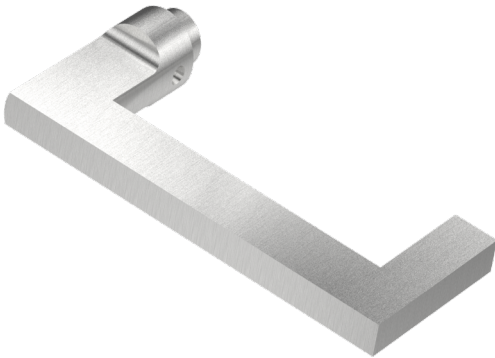
18L LEVER



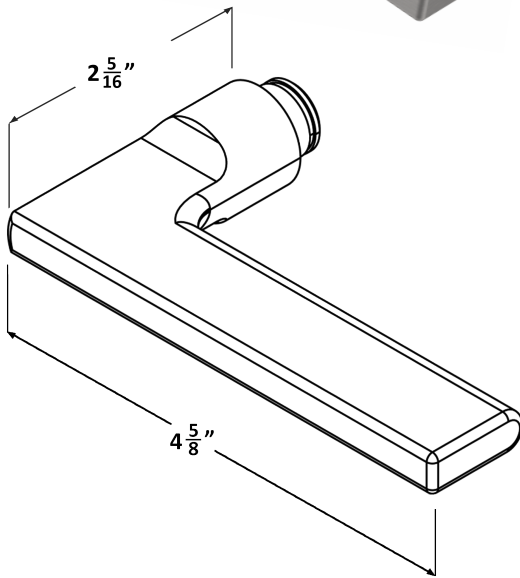
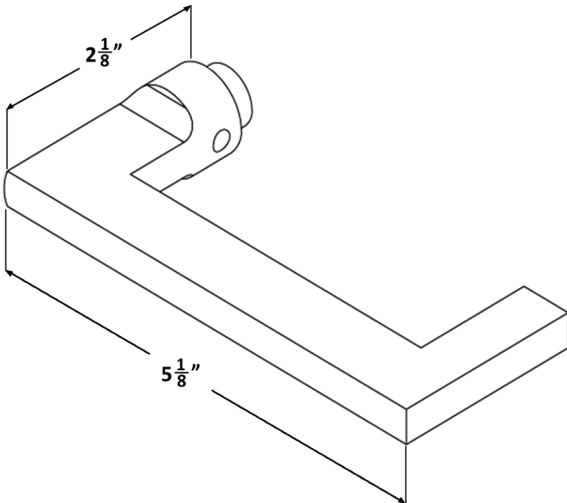
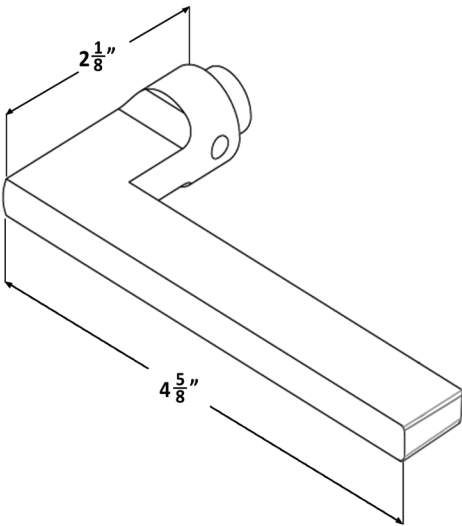
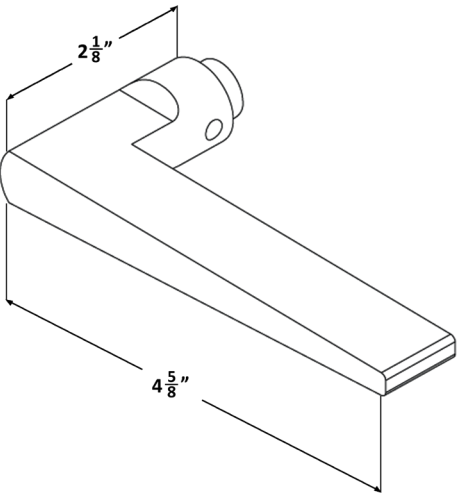
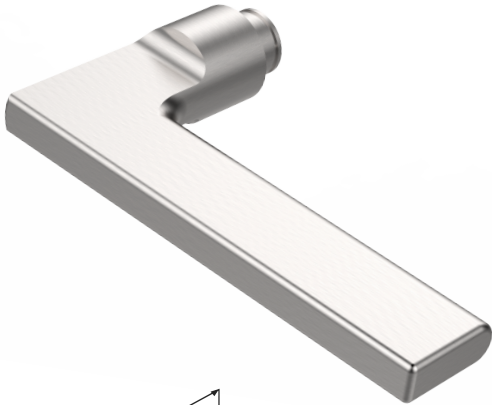
19L LEVER



20L LEVER

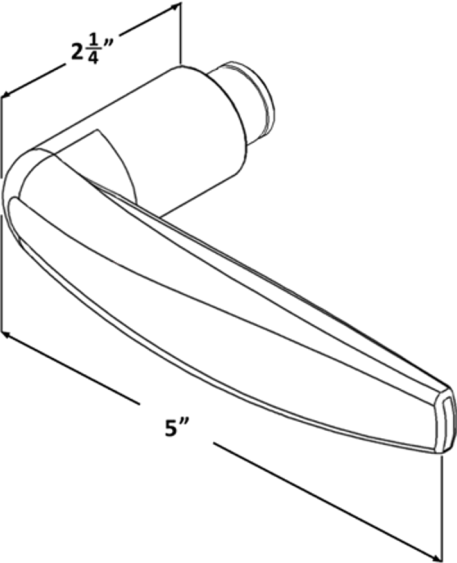


21L LEVER

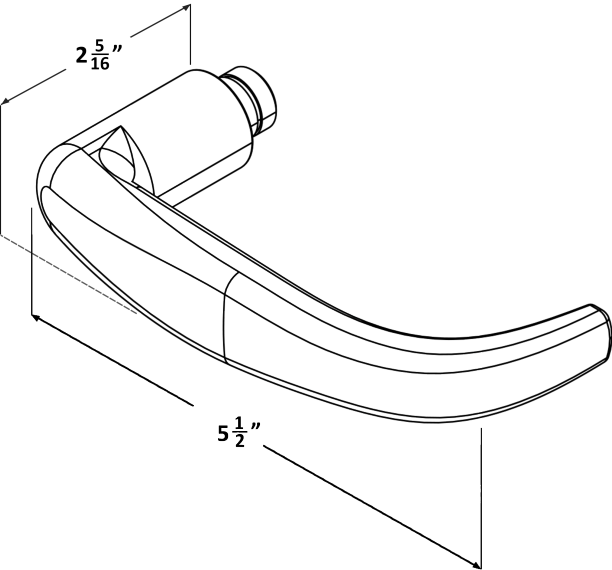


Accurate Lever Trim Options

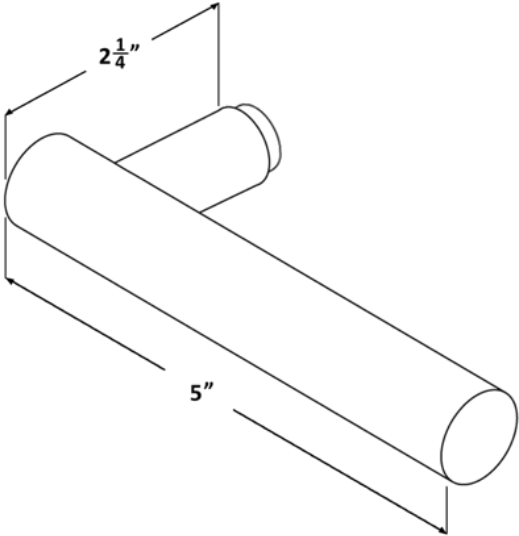
29L LEVER



39L LEVER

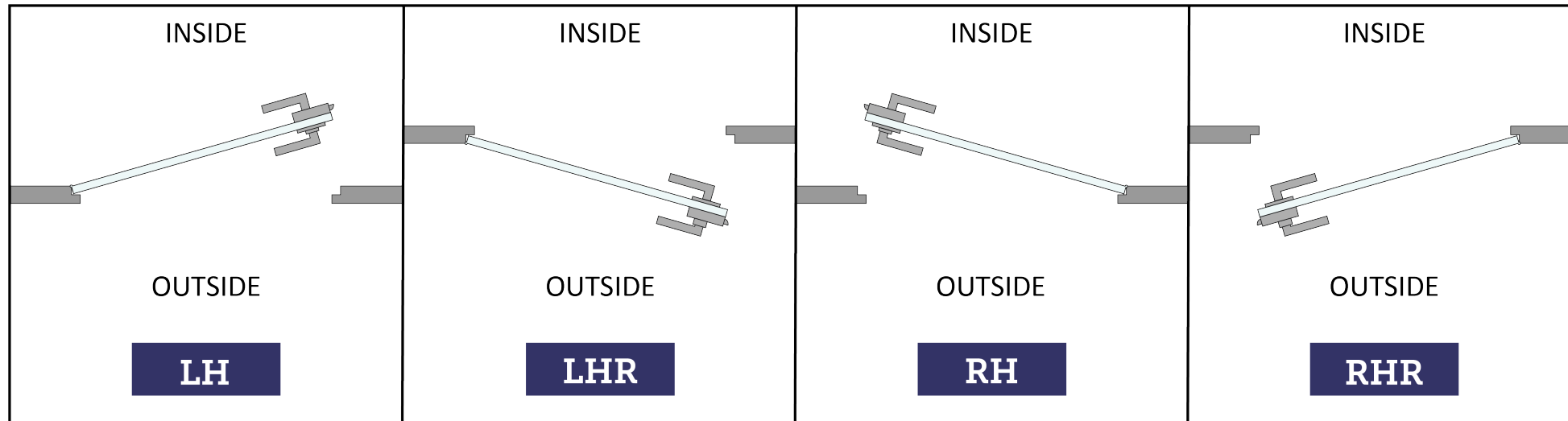


72L LEVER



HOW TO SPECIFY

HANDING

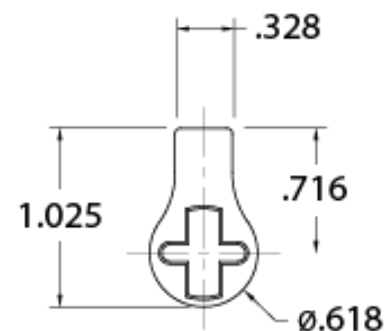


FINISHES

GROUP 1: US26D, ESN

GROUP 2: US4, US10B, US19, US26

Other finishes available, please [contact us](#) for assistance.



CYLINDERS & KEYING

GR86 Series locks accept any standard American mortise cylinder with a straight cam (other cams may be required for functions not listed). For details on required cams and compatibility with other manufacturers' cylinders, please visit: [Accurate Support](#).

HOW TO SPECIFY

FUNCTION.BACKSET.TRIM.FINISH.HAND.DOORTHICKNESS

Functions

See available functions (pg. 6)

Backset

1¹/₂" standard

Trim

Accurate Lever
Trim included (pg. 7-8)

Finishes

See available
finishes (pg. 9)

Door Thickness

Standard 1¹/₂" tempered glass.

EXAMPLES

GR86 Entrance | Glass Wall

E.g.: GR8656.112.18L.US26D.RH.1/2

GR86 Office | Aluminum Frame (4⁷/₈" Strike)

E.g.: GR8659.112.19L.US19.RH.1/2

GR86 Passage

E.g.: GR8625.112.29L.ESN.RH.1/2

NOTES

- Set up for levers by other manufacturers
- Other backsets, door thicknesses and custom anodized aluminum finishes/colors
- Access control applications
- Cylinders must be specific separately if required.

ACCURATE LOCK & HARDWARE
MANUFACTURERS OF LOCKS AND
CUSTOM ARCHITECTURAL HARDWARE

1 Annie Place | Stamford, CT 06902

P: 203.348.8865

F: 203.348.5234

E: sales@accuratelockandhardware.com

www.accuratelockandhardware.com

AMERICAN CRAFTED
— SINCE 1972 —